

Petersgate News

www.petersgateinfantschool.co.uk

Headteacher
Julie Cook

Spring Term
2021

7th January



Important Dates for this Term

Friday 12th February —Inset Day

Monday 15th to Friday 19th February —Half Term

Friday 2nd to Friday 16th April—Easter Break

COVID—19

Even though the school is only open to some children it is still vitally important that you all keep us up to date with any symptoms/tests results in your household.

Please could we remind all parents/guardians that if anyone in your household develops any of the COVID-19 symptoms that the whole household must self-isolate and the person with symptoms must be tested.

We ask that you keep us updated through the process via the adminoffice@petersgate-inf.hants.sch.uk email address.

We also need to know if a pupil is required to self-isolate due to track and trace/close contact with a positive case.

Please ensure social distancing is maintained at all times and all adults wear a face covering when on the school premises—thank you

Check out our updated website

www.petersgateinfantschool.co.uk

Why not become a member of the school's Facebook page

Petersgate Infant School

Please answer the two membership questions and tick to agree to the page rules ~ requests will not be approved without these being completed

What a difference a day makes!

It was so lovely to see you all back on Monday after your Christmas break... and then it all changed within a matter of hours!

I am so sorry that we are not able to see all of you but we promise will keep in touch regularly.

Lockdown 1 was a learning curve—we listened to your feedback and learned many lessons along the way.

School and Home Learning during Lockdown 3, therefore, should be more efficient, helpful and supportive for all our families at home and at school. Our staff team have been working day and night coming up with plans, lessons and resources to support learning at home.

Please keep in contact with us. Use Tapestry and Seesaw to communicate with your child's teachers, upload learning undertaken at home and let us know how you are getting on.

If you need any help at all, with anything outside of the classroom, please do get in touch via the school office.

We are only a call or an email away.

We are still a Petersgate Family. Children are still part of their classes—we are just temporarily separated right now.

Stay in Touch and Stay Safe!

School Office

In an effort to help prevent the spread of coronavirus in limiting numbers into the school office reception, could we please ask that you firstly contact us preferably via the adminoffice@petersgate-inf.hants.sch.uk email address or by telephone as we may be able to deal with any questions/enquiries this way.

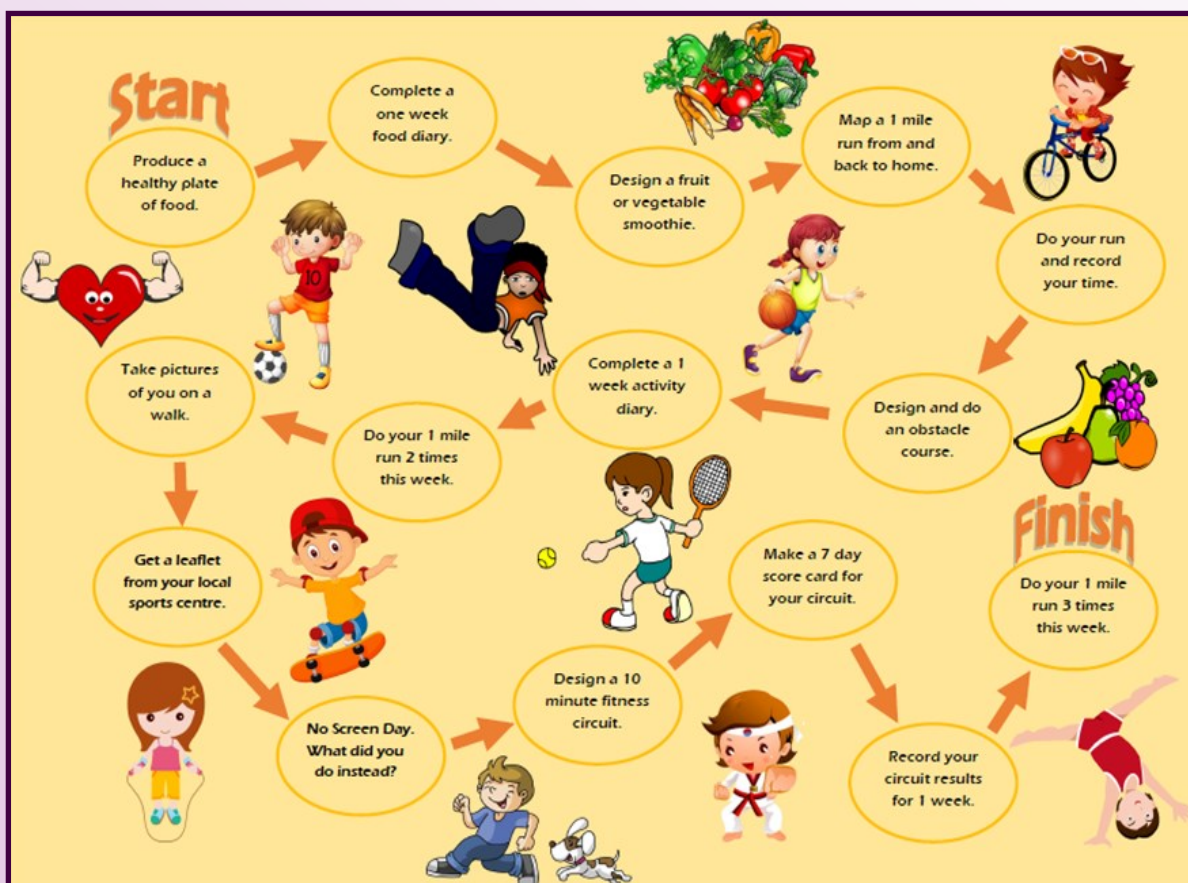
If you need to order a book bag/water bottle/bottle lid via Scopay, these will be sent home with your child.

We thank you in advance for your cooperation.

Physical Education

Although we are back in another lockdown there are still plenty of PE related activities that can be taking place within your home. We are challenging you to complete the Healthy Lives Challenge. There are 15 activities which can be completed over this lockdown period. Post your progress pictures onto Tapestry or/and Seesaw to keep your teacher up to date!

Healthy Lives Challenge



Other useful links for Home Learning

PE with Joe Wicks - Kids Workouts To Do At Home
www.youtube.com/c/TheBodyCoachTV

Premier Education - Stay Active
(more suited to KS1)
Premier Education are providing free downloadable
PE activities for all ages. Use this link to sign up
and get started!

www.premier-education.com/stay-active/

You can also watch their Stay Active videos here:
[www.youtube.com/channel/UCLNV8D56t6RV0wbsP
nbnYeA/featured](https://www.youtube.com/channel/UCLNV8D56t6RV0wbsPnbnYeA/featured)

Cosmic Kids - Yoga, mindfulness, relaxation
www.youtube.com/user/CosmicKidsYoga

Go Noodle -
www.family.gonoodle.com/

Miss Holly Coel
Turtle Class Teacher/Subject Lead for PE

Apply for a School Place—Closing Date

The closing date to apply for Early Years and Year 3 place for September 2021 is next, **Friday 15th January**

Please apply for a place online at www.hants.gov.uk/admissions.

New Early Years—Due to the current situation and with social distancing we are unable to undertake tours. Please see our website for a virtual tour using this link www.petersgateinfantschool.co.uk/.

If you would like to speak to a member of the Admissions Team, please contact Hampshire County Council on 0300 555 1317.

Inset Days—2021

A reminder the inset days for this year 2021 are:

Friday 12th February

Friday 18th June

At the end of the newsletter is HCC's term dates as a reminder for your information.

Attendance—December 2020

Clownfish	98.8%
Jellyfish	97.7%
Starfish	96.7%
Manta Ray	98.3%
Octopus	97.7%
Turtle	97.0%
Lobster	97.1%
Seahorse	97.4%
Whale	96.3%

**Well done to
Clownfish class**

Reminders

Contact Details—

It is vital we have up to date contact details from you. If you have moved address, changed any contact telephone numbers or email address please let the school office know via adminoffice@petersgate-inf.hants.sch.uk email address, so we can update your child's records.

Medical Conditions—

It is really important that you keep us informed if anything changes regarding medical conditions, either new or existing. You can do this by again, sending an email to adminoffice@petersgate-inf.hants.sch.uk.

Absences : Absence Line—

If your child is unwell you must leave a message on the 'Absence Line', stating your child's name, class and reason for absence by 9am. The Absence Line is available at all times.

We do require you to leave a message everyday your child is absent, even if your child is not in school because of the diarrhoea and vomiting 48hr exclusion rule.

We check for absences daily and if we have not received a message by 9:30am, we have to assume your child is missing and a telephone call will be made to enquire reasons for their absence.

Medical Appointments : Absence Line—

If your child has a medical appointment and will not be in when the school opens, you can also leave a message on the absence line by 9am on the day of the appointment.

Please also include whether your child will be bringing in a packed lunch from home or will need a school dinner. If a school dinner is required, please state their choice of red or green.

We also require proof of any medical appointments i.e. appointment card, medical letter or able to show the school office a text message on your phone for our records.

Reminders continued...

Nut Allergies and Packed Lunch—

We currently have children in school that have a severe, life threatening, nut allergy. We DO NOT allow anything with nuts or that may contain nuts in school.

This includes (but is not limited to) packed lunches, after school club snacks and birthday treats. Any food item that also states 'may contain nuts/traces of nut' is included in this (most chocolate spreads and chocolate products) so please check the labels.

We ask that packed lunches are as healthy as possible but understand that crisps and small chocolate biscuit bars will be included. However, we ask that sweets and fizzy drinks are not included.

Early Years—as children in Early Years do not take their water bottles into the lunch hall with them, water is available in cups. Children may have an additional drink in their packed lunches if you wish.

We would like to thank you for helping us to ensure the safety of all children at Petersgate.

Weather—Snow

A reminder, should we have to close the school due to adverse weather conditions over the next few months, this is how we will inform parents:

We will send a text message via ParentMail. Please make sure that you can receive all ParentMail texts and emails. Always make sure that your details are up to date.

Please check the Hampshire County Council website for the latest school closures.

www.hants.gov.uk/education/schoolclosures/

Please know that our primary concern is for the safety and wellbeing of everyone, which I am sure you will agree, is first and foremost when any decision needs to be made.

Petersgate Community Celebrations

We would like to extend our celebrations from school achievements to our 'Petersgate Family' achievements. We would like to write your achievements in our weekly newsletter to share with other families and friends.

Perhaps you or your child has taken part in an event, has recently achieved something outside of school or helped in the community. We would love to hear all about it!

If you would like to share with us then please email your stories to adminoffice@petersgate-inf.hants.sch.uk with details of all that you have achieved or taken part in. If you have any photos then we would like to add these too. We look forward to hearing your stories and celebrate with the Petersgate Family.

Mrs Mavis Bailey, our school crossing patrol, would like to say a big “thank you” for all her Christmas gifts that she received from you. She was really touched by your generosity!



**School Terms And Holidays
2020 – 2021**

Determined programme of school term and holiday dates for county and controlled schools for the
academic year 2020/21

SEPTEMBER 2020								OCTOBER 2020								NOVEMBER 2020						
M		7	14	21	28			M		5	12	19	26			M		2*	9	16	23	30
T	1	8	15	22	29			T		6	13	20	27			T		3	10	17	24	
W	2	9	16	23	30			W		7	14	21	28			W		4	11	18	25	
T	3*	10	17	24				T	1	8	15	22	29			T		5	12	19	26	
F	4	11	18	25				F	2	9	16	23#	30			F		6	13	20	27	
S	5	12	19	26				S	3	10	17	24	31			S		7	14	21	28	
S	6	13	20	27				S	4	11	18	25				S	1	8	15	22	29	
DECEMBER 2020								JANUARY 2021								FEBRUARY 2021						
M		7	14	21	28			M		4*	11	18	25			M		1	8	15	22*	
T	1	8	15	22	29			T		5	12	19	26			T		2	9	16	23	
W	2	9	16	23	30			W		6	13	20	27			W		3	10	17	24	
T	3	10	17	24	31			T		7	14	21	28			T		4	11	18	25	
F	4	11	18#	25				F	1	8	15	22	29			F		5	12#	19	26	
S	5	12	19	26				S	2	9	16	23	30			S		6	13	20	27	
S	6	13	20	27				S	3	10	17	24	31			S		7	14	21	28	
MARCH 2021								APRIL 2021								MAY 2021						
M	1	8	15	22	29			M		5	12	19*	26			M		3	10	17	24	31
T	2	9	16	23	30			T		6	13	20	27			T		4	11	18	25	
W	3	10	17	24	31			W		7	14	21	28			W		5	12	19	26	
T	4	11	18	25				T	1#	8	15	22	29			T		6	13	20	27	
F	5	12	19	26				F	2	9	16	23	30			F		7	14	21	28#	
S	6	13	20	27				S	3	10	17	24				S	1	8	15	22	29	
S	7	14	21	28				S	4	11	18	25				S	2	9	16	23	30	
JUNE 2021								JULY 2021								AUGUST 2021						
M		7*	14	21	28			M		5	12	19	26			M		2	9	16	23	30
T	1	8	15	22	29			T		6	13	20	27			T		3	10	17	24	31
W	2	9	16	23	30			W		7	14	21	28			W		4	11	18	25	
T	3	10	17	24				T	1	8	15	22	29			T		5	12	19	26	
F	4	11	18	25				F	2	9	16	23#	30			F		6	13	20	27	
S	5	12	19	26				S	3	10	17	24	31			S		7	14	21	28	
S	6	13	20	27				S	4	11	18	25				S	1	8	15	22	29	

Inset Dates - 2020/2021

03.09.2020 / 04.09.2020 / 23.11.2020 / 12.02.2021 / 18.06.2021

Start

Produce a healthy plate of food.



Take pictures of you on a walk.



Do your 1 mile run 2 times this week.



Complete a one week food diary.



Design a fruit or vegetable smoothie.

Map a 1 mile run from and back to home.



Do your run and record your time.



Design and do an obstacle course.



Finish

Do your 1 mile run 3 times this week.



Record your circuit results for 1 week.

Make a 7 day score card for your circuit.



Design a 10 minute fitness circuit.



Complete a 1 week activity diary.



No Screen Day. What did you do instead?



Get a leaflet from your local sports centre.

